

Machine Learning

Chapter 0. Orientation

Machine Learning

- Instructor: T. Murata (room E503, West8 building, murata @ cs.titech.ac.jp)
- Score : based on quizzes (every week) and assignments (twice or three times)
- URL: www.ai.cs.titech.ac.jp/lecture/ml
 - teaching materials are available online
- Caution: some classes are not on Mondays
 - Nov. 6(**Thu**), 2014
 - Nov. 26(**Wed**), 2014
 - Jan. 15(**Thu**), 2015

Textbook

- Data Mining -- Practical Machine Learning Tools and Techniques with Java Implementations (Third Edition), Witten and Frank, Morgan Kaufmann
- <http://www.cs.waikato.ac.nz/~ml/weka/book.html>



Goal of this course

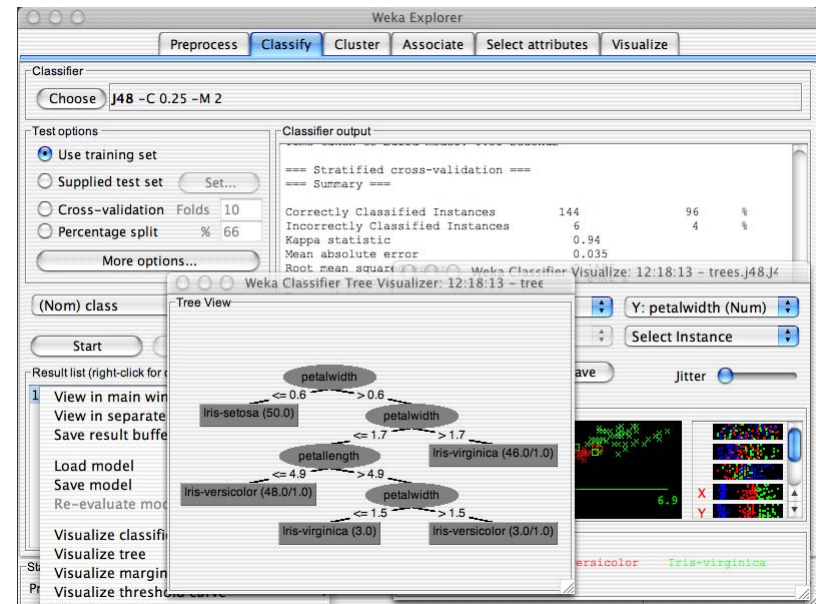
- Learn methods for mining real-world data using Weka (a data mining tool)

<Challenges>

- Several methods of different properties (decision trees, rules, naïve bayes, regression, instance-based learning ...)
- Imperfect real-world data (missing data, noise, few available data ...)

Weka

- Open-source data mining tool developed by Waikato University, New Zealand (Waikato Environment for Knowledge Analysis)
- GUI for interactive data mining
- <http://www.cs.waikato.ac.nz/~ml/weka/index.html>



About this course

- I will not accept assignments written in Japanese.
- Non-CS students, undergraduate students, YSEP students and ACAP students are also welcomed.
- Copying other students' assignments is prohibited. "Similar" assignments will be rejected.