

Machine Learning

Chapter 0. Orientation

Machine Learning

- Instructor: T. Murata (room E503, West8 building, murata @ cs.titech.ac.jp)
- Contents: practical data mining methods
- Score : quizzes or assignments or tests
- URL: www.ai.cs.titech.ac.jp/lecture/ml
- Caution: Some classes are not on Mondays
 - Oct. 9(Tue), 2012
 - Jan. 17(Thu), 2013

Textbook

- Data Mining -- Practical Machine Learning Tools and Techniques with Java Implementations (Third Edition), Witten and Frank, Morgan Kaufmann
- <http://www.cs.waikato.ac.nz/~ml/>



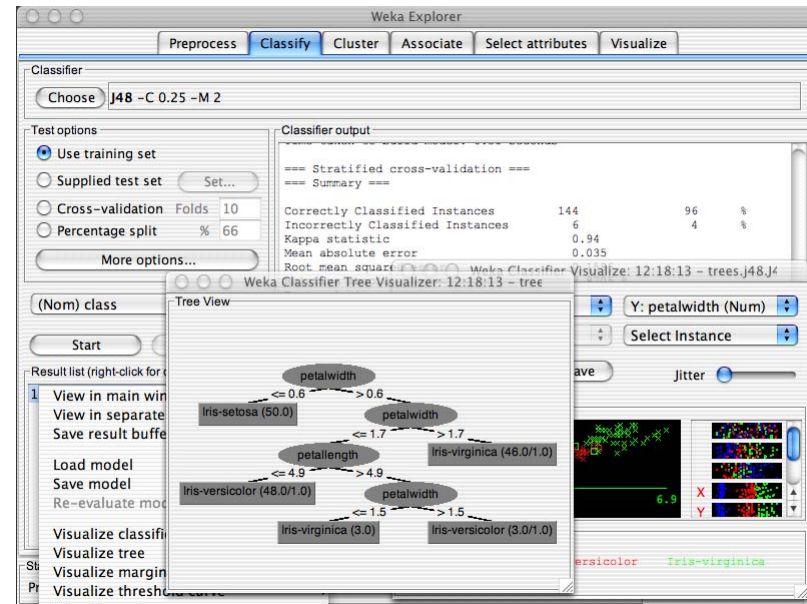
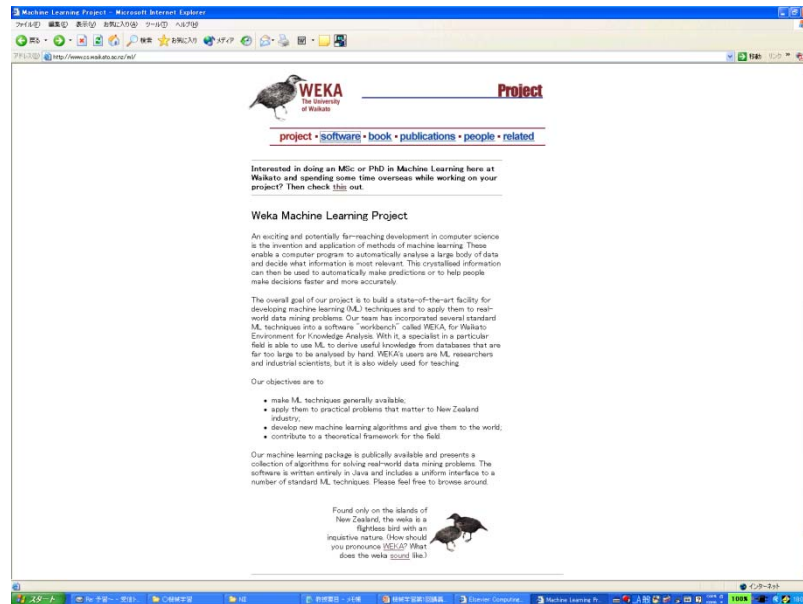
Goal of this course

- learning characteristics of basic methods (decision trees, rules, instance-based learning ...)
- learning from real-world data (missing data, noise, ...)
- mining data by yourself with Weka (a data mining tool)

Weka

- Open-source data mining tool developed by Waikato University, New Zealand (Waikato Environment for Knowledge Analysis)
- Java-based implementation
- GUI for interactive data mining
- <http://www.cs.waikato.ac.nz/~ml/>

Examples



About this course

- This course will be taught in English. I will not accept assignments written in Japanese.
- Non-CS students, undergraduate students, YSEP students and TMDU students are also welcomed.
- Copying the assignments of other students is prohibited.
 - “similar” assignments will be rejected