

# Machine Learning

## Chapter 0. Orientation

# Machine Learning

- Instructor: T. Murata (room E503, West8 building, murata @ cs.titech.ac.jp)
- Contents: practical data mining methods
- Score : assignments and tests
- URL: [www.ai.cs.titech.ac.jp/lecture/ml](http://www.ai.cs.titech.ac.jp/lecture/ml)
- Caution: Some classes are not on Mondays
  - Oct. 21(Thu), 2010

# Textbook

- Data Mining -- Practical Machine Learning Tools and Techniques with Java Implementations (Second Edition), Witten and Frank, Morgan Kaufmann
- <http://www.cs.waikato.ac.nz/~ml/>
- Third Edition will be available soon (next February)



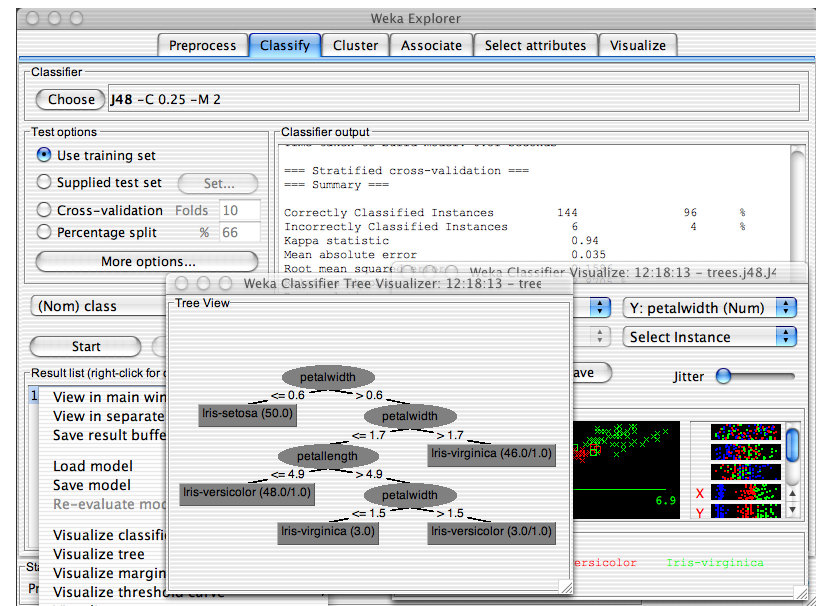
# Goal of this course

- learning characteristics of basic methods (decision trees, rules, instance-based learning ...)
- learning from real-world data (missing data, noise, ...)
- mining data by yourself with Weka

# Weka

- Open-source data mining tool developed by Waikato University, New Zealand (Waikato Environment for Knowledge Analysis)
- Java-based implementation
- GUI for interactive data mining
- <http://www.cs.waikato.ac.nz/~ml/>

# Examples



# About this course

- All lectures are in English. I will not accept assignments written in Japanese.
- Non-CS students, undergraduate students, YSEP students and TMDU students are also welcome.
  - same evaluation criteria as CS graduate students
- Copying the assignments of other students is prohibited.
  - “similar” assignments will be rejected