

Machine Learning

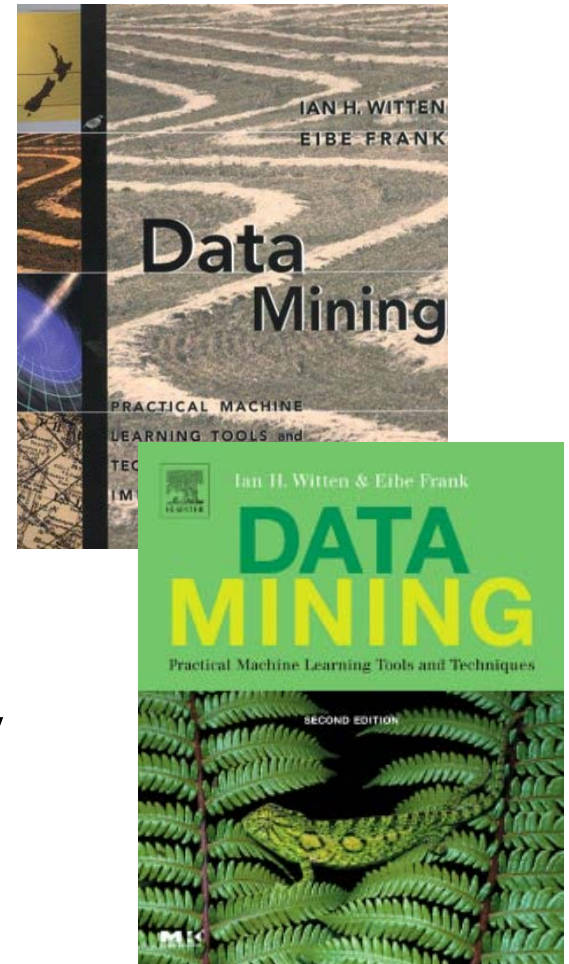
Chapter 0. Orientation

Machine Learning

- Instructor: T. Murata (room E503, West8 building, murata @ cs.titech.ac.jp)
- Contents: practical data mining methods
- Score : assignments
- URL: www.ai.cs.titech.ac.jp/lecture/ml
- Caution: Some classes are not on Mondays

Textbook

- Data Mining -- Practical Machine Learning Tools and Techniques with Java Implementations (Second Edition), Witten and Frank, Morgan Kaufmann
- <http://www.cs.waikato.ac.nz/~ml/>



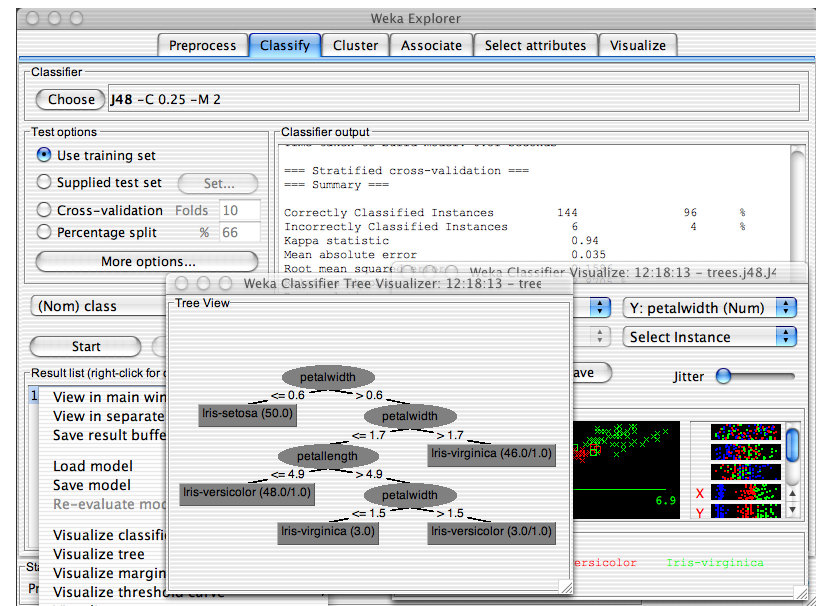
Goal of this lecture

- learning characteristics of basic methods (decision trees, rules, instance-based learning ...)
- learning from real-world data (missing data, noise, ...)
- mining data by yourself

Weka

- Open-source data mining tool developed by Waikato University, New Zealand (Waikato Environment for Knowledge Analysis)
- Java-based implementation
- GUI for interactive data mining
- <http://www.cs.waikato.ac.nz/~ml/>

Example



Q & A about this lecture

- Language
 - lecture: English
 - assignment : English
- Undergraduate students
 - welcome
 - same evaluation criteria as graduate students